

The BPW landing gear in use

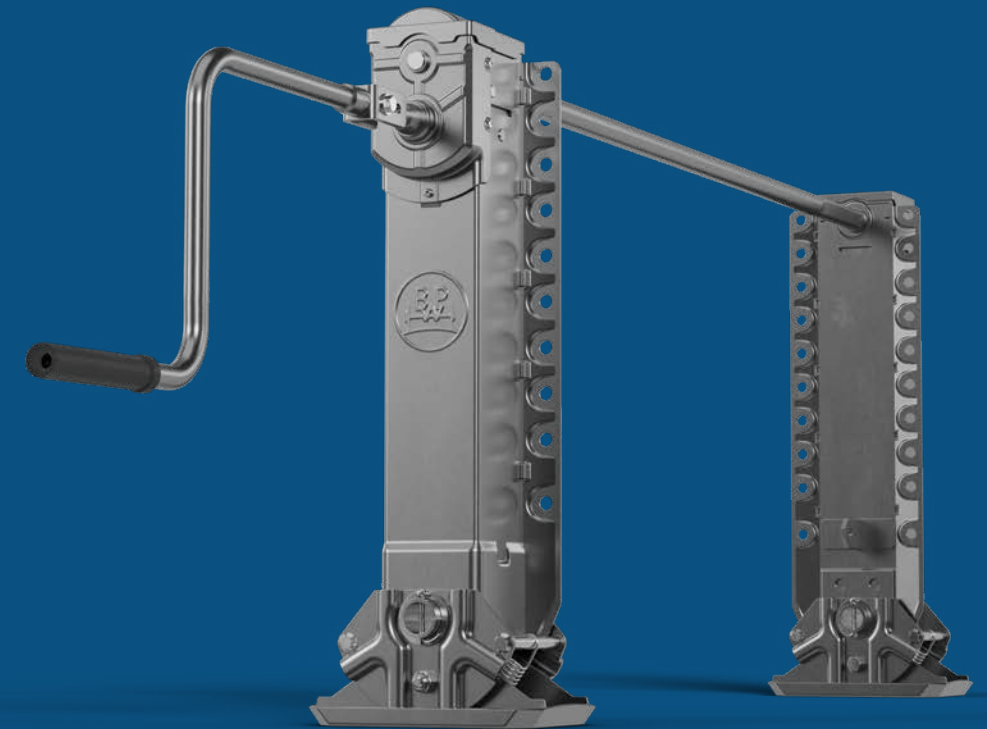
The brands of the BPW Group:



we think transport 

BPW landing gear

# DUAL SUPPORT



BPW landing gear 19622401 e divve GmbH

**BPW Bergische Achsen Kommanditgesellschaft**

Postbox 12 80 · 51656 Wiehl, Germany · Phone +49 (0) 2262 78-0

info@bpw.de · [www.bpw.de](http://www.bpw.de)

# SUPPORTING THE LOAD

Increase the efficiency and safety of your trailer with the BPW landing gear. The robust shaft and continuous fastening plate mean that the trailer stands firmly and safely on both legs. The low crank forces make your day-to-day transport work easier and the low weight of the landing gear increases your vehicle's usable load. The ECO-Li 91 longlifelubrication ensures that no maintenance is needed for three years. You can trust BPW landing gear for smooth and safe transport every day.



## ROBUST

The reinforced shaft and the continuous fastening plate guarantee optimum strength.



## CONVENIENT

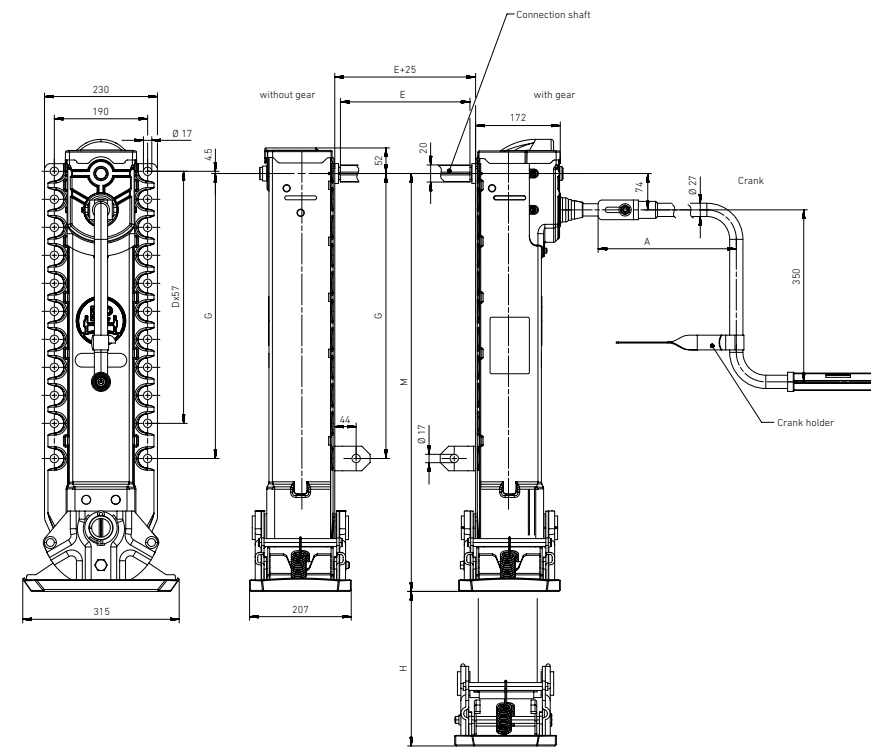
The BPW landing gear offers simple and flexible attachment. Low crank forces make day-to-day use easier.



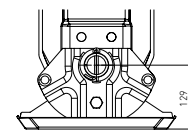
## ECONOMICAL

The BPW landing gear are particularly light, because every kilo of usable load counts. Plus, they require no maintenance for three years due to longlife lubrication with ECO-Li 91.

## OVERVIEW DRAWING

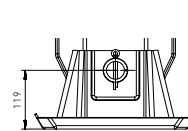


## FOOT VARIANTS



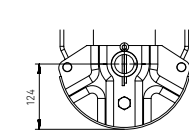
VERSION S

02.3710.01.02



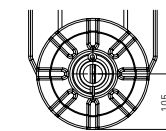
VERSION T

02.3710.00.01



VERSION A

02.3710.03.01



VERSION R

02.3710.02.00

## TECHNICAL DATA

### TECHNICAL DATA PER SET

Lifting capacity	24 t
Static load	50 t

### TRAVEL PER CRANK ROTATION

Slow gear	0,8 mm
Fast gear	9,6 mm
Crank force with 16 t load	175 N

## STANDARD PORTFOLIO

Length Lifting M	Height H	G	D	Foot design	BPW item number without gear unit	BPW item number with gear unit
650	305	380	6	T	02.3710.50.02	02.3710.51.02
				S	02.3710.52.02	02.3710.53.02
				W/o foot	02.3710.18.02	02.3710.19.02
700	355	430	7	T	02.3710.60.02	02.3710.61.02
				S	02.3710.62.02	02.3710.63.02
				W/o foot	02.3710.16.02	02.3710.17.02
750	405	480	8	T	02.3710.20.02	02.3710.21.02
				S	02.3710.22.02	02.3710.23.02
				W/o foot	02.3710.10.02	02.3710.11.02
800	455	530	8	T	02.3710.30.02	02.3710.31.02
				S	02.3710.32.02	02.3710.33.02
				W/o foot	02.3710.12.02	02.3710.13.02
850	505	580	9	T	02.3710.40.02	02.3710.41.02
				S	02.3710.42.02	02.3710.43.02
				W/o foot	02.3710.14.02	02.3710.15.02

Alternative versions available on request.

## ACCESSORIES

### CRANK

Dimension A	Dimension B (slow gear)	Dimension C (fast gear)	BPW item number
450	715	740	02.1404.31.01

Hook for crank: 02.1408.03.00

### CONNECTION SHAFT

Dimension E	BPW item number
1500	02.4307.10.01